

## SAND HUTTON GRAVEL PITS.



YDAA control the fishing on both pits at Sand Hutton.

The smallest is rarely fished.

Members only.

No fishing between 22:00 hours and 07:00 hours or during the hours of darkness.

No matches.

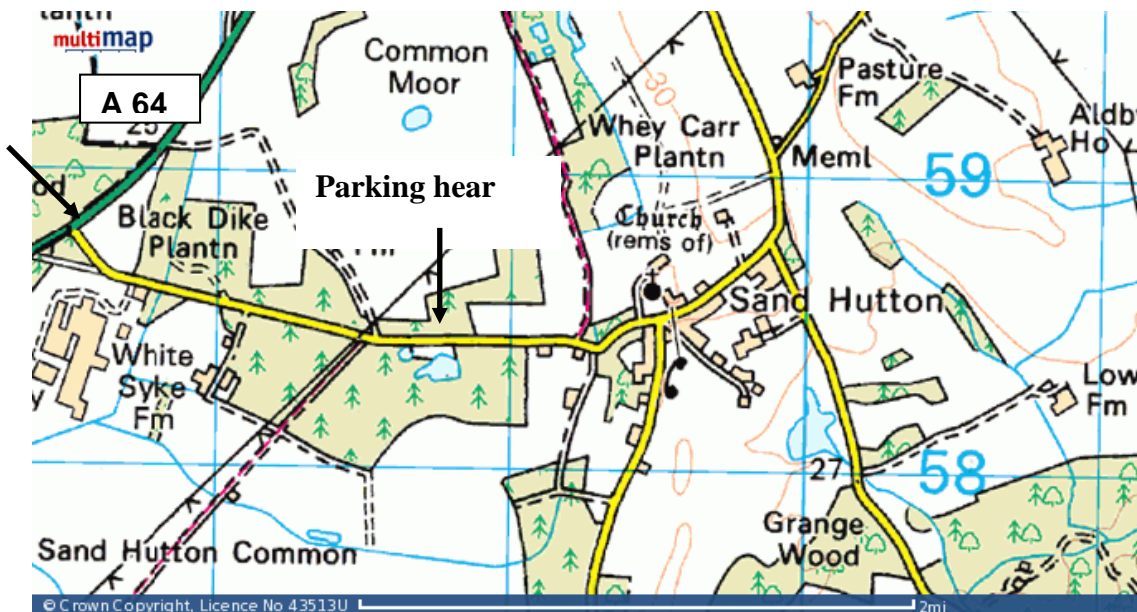
Sand Hutton Gravel pit is one of YDAAs prettiest waters.

It is sheltered by the surrounding woodlands and beware, in the warmer months you are guaranteed bites from the large mosquitoes that live here!

There are a limited number of swims and it can be quite busy at times.

Quality bream, roach and tench make up catches with occasional rudd and perch. It holds many smaller pike and it is rumoured to hold a few very large carp.

Pole or waggler will catch fish close in. Maggot, caster, worm, sweetcorn and bread being the best baits. The feeder will produce good catches of bream when casting to the gravel bar in the middle of the lake



Travelling from York, take the A64 to (Scarborough) turning right to Sand Hutton (DEFRA Labs) just after the Tangle Wood Pub.

Pits are roughly three quarters of a mile down this road on the right. At the present time parking is in the lay by or at roadside.

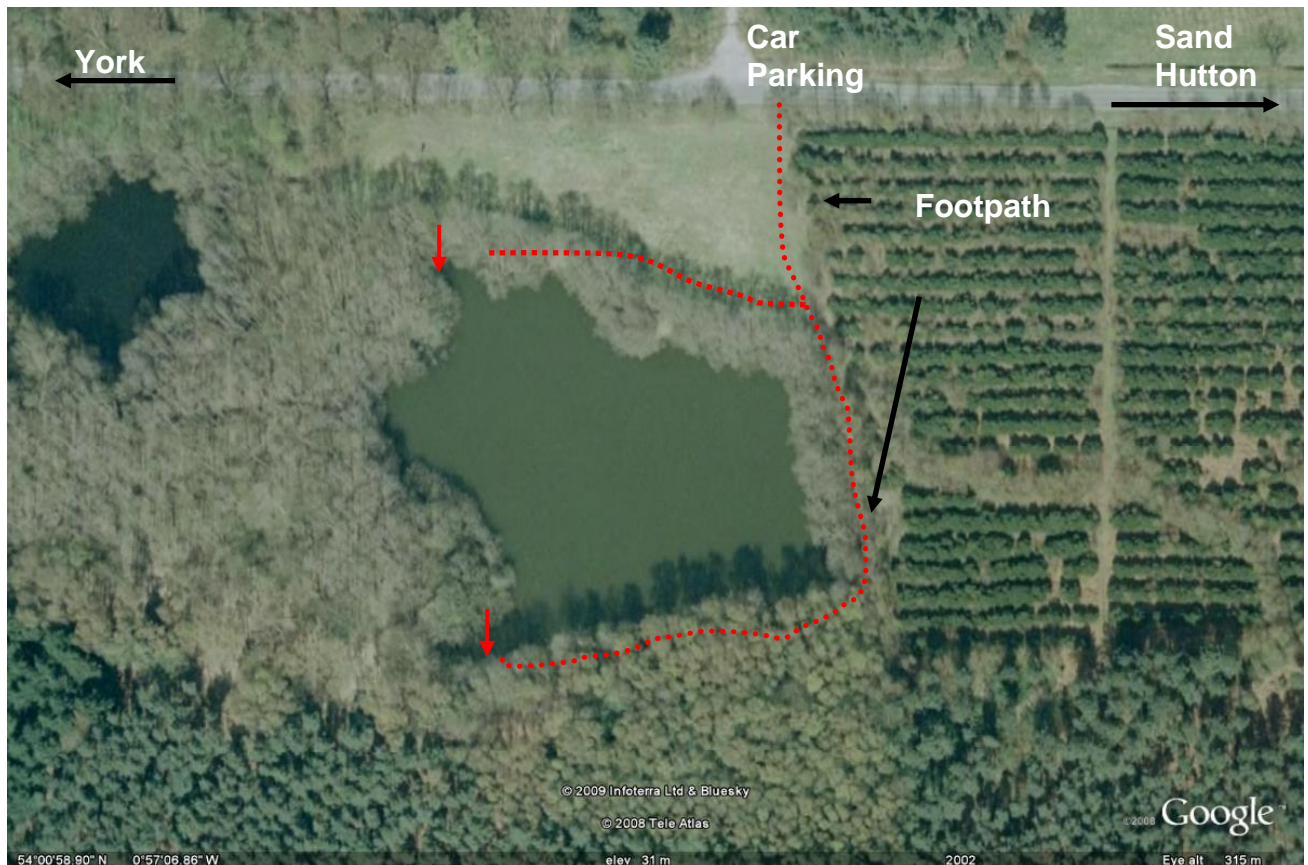
**Grid ref**

Latitude 54° 00.57"N

Longitude 0°55.40"W

**Postcode district: YO41 1**

↓ Denotes limits of Fishery



North

